



10 Canons Close, Reigate, Surrey, RH2 9RR

[www.jamesdeanproperty.co.uk](http://www.jamesdeanproperty.co.uk)



**J A M E S D E A N**  
E S T A T E A G E N T S

Two double bedroom terraced house with two parking spaces set in a residential cul de sac close within 0.5 miles of Reigate Station and High Street.

The property consists of an entrance hall, spacious lounge, kitchen/breakfast room, two double bedrooms and a family bathroom. There is a private garden to the rear and parking for two vehicles.

Canons Close is a residential cul de sac situated in Reigate. Reigate Station and High Street are within 0.5 miles..

Reigate town offers a wide range of well-known high street brand names along with individual boutique shops, cafes & eateries. If you enjoy dining out, then Reigate will cater for almost every



culinary delight. Whether it's breakfast, lunch or dinner you can choose from a wealth of favourites including: Bill's, Cote, Wagamama, Café Rouge, Pizza Express, Nando's, Buenos Aires Steakhouse, Café Nero located within the Bell Tower, Costa and Starbucks. Reigate is also well known for its quality independent eateries, clothing shops, jewellers, hairdressers & barbers. Our personal favourites are Canakin a family run coffee shop located next to our high street office, Robert & Edwards Butchers selling a wide range of quality local produce.

Priory Park is very popular with families and keep fit enthusiasts, the facilities are fantastic with Tennis Courts, Skate Park, children's play park, lake & the café located in the heart of the park. At weekends the park is a popular attraction with Reigate's Park Run and other seasonal attractions throughout the year.

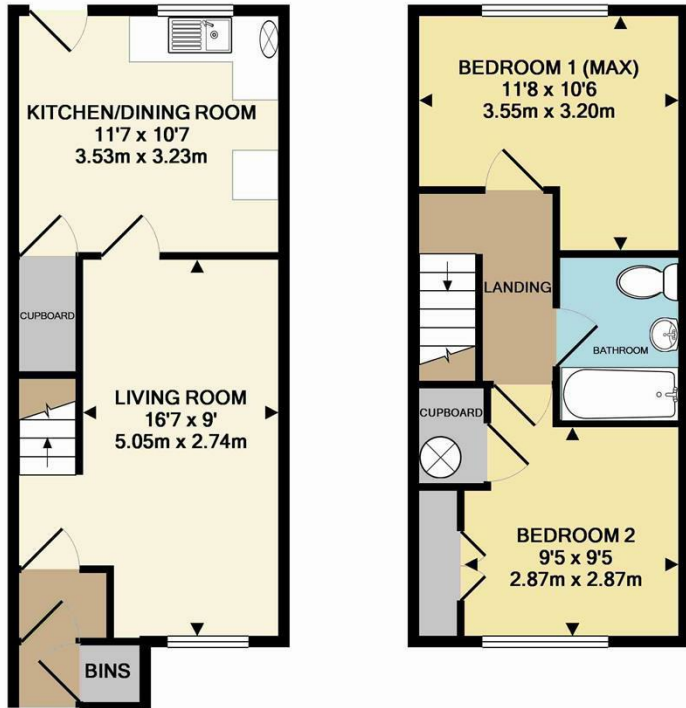
Reigate also boasts a range of highly regarded schools such as Reigate Grammar, Dunottar, Micklefield, Holmesdale, Reigate Priory, Reigate Secondary School and Reigate College.

It's also a very popular location for all types of commuter with direct links from Reigate train station to London Victoria while the M25 Junction 8 is also easily accessible.

**£1,500 Per Calendar Month**



## Floor plan



GROUND FLOOR  
APPROX. FLOOR  
AREA 333 SQ.FT.  
(30.9 SQ.M.)

1ST FLOOR  
APPROX. FLOOR  
AREA 317 SQ.FT.  
(29.4 SQ.M.)

TOTAL APPROX. FLOOR AREA 650 SQ.FT. (60.4 SQ.M.)  
Made with Metropix ©2015

Energy Efficiency Rating		Current	Potential
Very energy efficient - lower running costs			
(92 plus) A			
(81-91) B			
(69-80) C			
(55-68) D			
(39-54) E			
(21-38) F			
(1-20) G			
Not energy efficient - higher running costs			
England & Wales	EU Directive 2002/91/EC		

Environmental Impact (CO <sub>2</sub> ) Rating		Current	Potential
Very environmentally friendly - lower CO <sub>2</sub> emissions			
(92 plus) A			
(81-91) B			
(69-80) C			
(55-68) D			
(39-54) E			
(21-38) F			
(1-20) G			
Not environmentally friendly - higher CO <sub>2</sub> emissions			
England & Wales	EU Directive 2002/91/EC		

### Key information

Internal Area: sq ft

Tenure:

Viewing: Strictly By Appointment

**Do you have a property to sell?**

If so we can provide you with a free market appraisal.

**Do you need a mortgage?**

Our in house financial advisor would be delighted to provide you with a no obligation quotation.

**Do you need a solicitor?**

We can provide you with a no obligation quote from our preferred solicitor.

[www.jamesdeanproperty.co.uk](http://www.jamesdeanproperty.co.uk)



# JAMES DEAN

ESTATE AGENTS

67 HIGH STREET, REIGATE, RH2 9AE  
T: 01737 242331 F: 01737 243481  
E: reigate@jamesdeanproperty.co.uk

66 VICTORIA ROAD, HORLEY, SURREY, RH6 7PZ  
T: 01293 784411 F: 01293 784422  
E: info@jamesdeanproperty.co.uk

Please note that no appliances or systems have been tested. All measurements are approximate and must not be relied upon for any purpose. Any appliances listed in these details may not be included in the sale price. These particulars do not form any part of an offer or contract and their accuracy cannot be guaranteed. Lease information where applicable has been provided by the vendor. James Dean cannot be held liable if the information is incorrect.